

California Pacific  
Regional Rehabilitation Center

2007  
*Facts about  
Our programs*

Castro at Duboce  
San Francisco, California 94114  
415-600-6000  
[www.cpmc.org/rehab](http://www.cpmc.org/rehab)

## FACTS ABOUT OUR PROGRAMS

**California Pacific Regional Rehabilitation Center (CPRRC)** is recognized as a regional referral source for Brain Injury, Spinal Cord Injury, Stroke, Amputee and General Rehabilitation. CPRRC is accredited by the Commission on Accreditation of Rehabilitation Facilities (CARF) for Comprehensive Adult Inpatient Rehabilitation Programs, Comprehensive Inpatient Adult Brain Injury Programs, Outpatient Adult Brain Injury Program, the Adult Spinal Cord Rehabilitation System of Care (includes Inpatient and Outpatient services) and Medical Rehabilitation Case Management. This International CARF accreditation is the hallmark of our commitment to the highest Rehabilitation Standards so that we may best serve our community. We are proud to be a part of CARF's forty-year tradition of excellence. California Pacific Regional Rehabilitation Center is also accredited by the Joint Commission on Accreditation of Healthcare Organizations (JCAHO).

Our Specialty programs are designed around complex catastrophic rehabilitation diagnoses. This means that our programs are able to address the complicated rehabilitation needs of the individual as well as the complex medical needs that result in catastrophic illness. We prove our program's effectiveness by documenting our outcomes. Our patients' outcomes are the result of the care, skill, and commitment of our team at California Pacific Regional Rehabilitation Center.

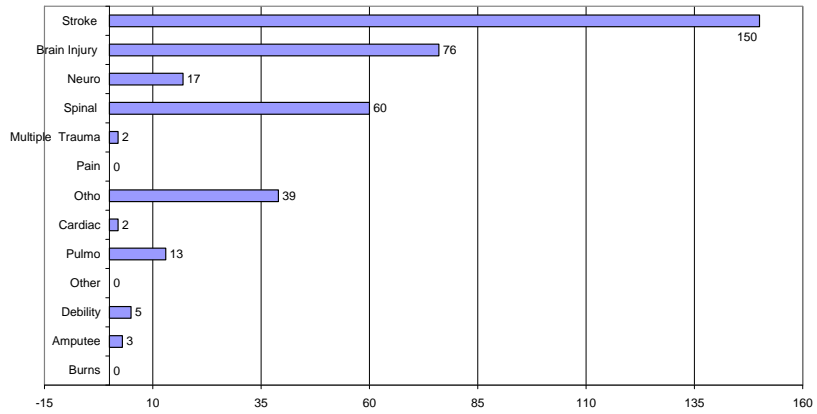
We track and document the success and effectiveness of our programs through the use of an independent national data collection system. This system utilizes the Functional Independence Measure scale (FIM). FIM is a measure of a patient's function that includes self-care, mobility, locomotion, communication, continence, social and thinking skills. These functions are measured at the time of admission, discharge and three months after-discharge. The information is independently collected and computed by the University of Buffalo, New York and then shared with each facility so that the participating rehabilitation programs can view their community standards and see how well they are doing. It also allows us the opportunity to share this information with our community at large. We are proud to be a participant in this distinguished, independent program and equally proud of our outcomes. We are honored to share them with you.

**FIM**™ Instrument copyright 1993, Uniform Data System for Medical Rehabilitation, a division of UB Foundation Activities, Inc. All rights reserved. Used with permission. All of the marks associated with **FIM**™ belong to UB Foundation Activities, Inc.

California Pacific Regional Rehabilitation Center  
San Francisco, California

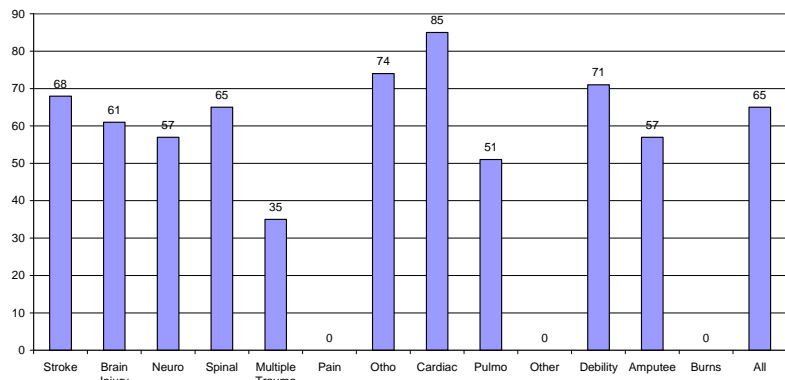
### Number of Persons Served 2007

367 patients  
Males 53%  
Females 47%



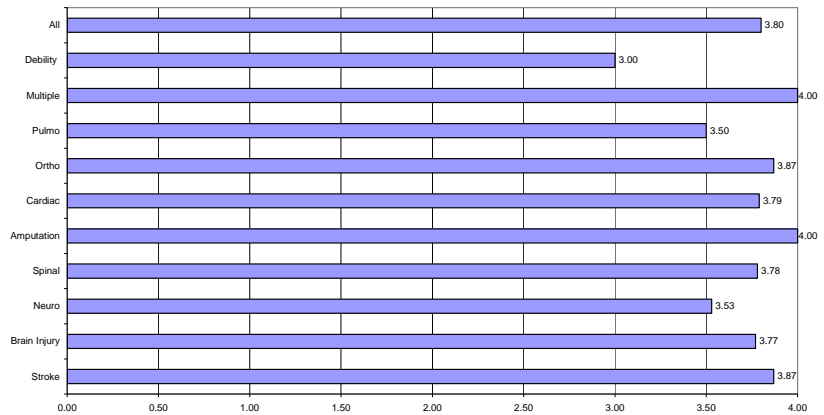
\*Uniform Data System for Medical Rehabilitation (UDSmr)  
Data for patients 1/1/2007 - 12/31/2007

### Average Age by Impairment Group 2007



\*Uniform Data System for Medical Rehabilitation (UDSmr)  
Data for patients 1/1/2007 - 12/31/2007

### Overall Satisfaction 2007



\* IT Health Track (IRF-PAI Follow-Data for patients discharged from 1/1/07 to 12/31/07)

## Acute Specialty Rehabilitation Programs

Acute Specialty Rehabilitation Programs at California Pacific Regional Rehabilitation Center utilizes coordinated, outcome-driven, integrated programs that address the complicated rehabilitation needs of individuals. We emphasize a comprehensive and personalized approach to recovery. Family participation is encouraged and patient & family education occurs throughout the rehabilitation process.

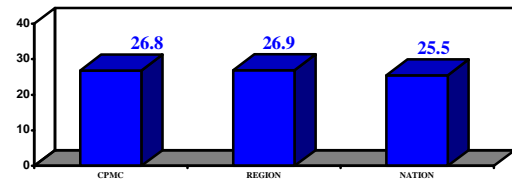
Our successful patient outcomes were achieved while serving 367 patients from the region. Our patients experienced an overall **Improvement in Functional Level** (26.8) in line with the region and higher than the national average.

Our overall Admission FIM average was 61.0.

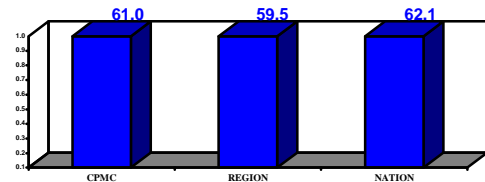
Our overall average **Length of Stay Efficiency** for all programs, which indicates patient progress per day in our Acute Rehabilitation Programs was 1.96, with an average **Length of Stay** of 18 days.

Our **Community Discharges**, 78%, was higher than that of the nation and in line with the region. 3% of our discharges were to Long Term Care facilities, 13% were to Acute Care and 6% were to other facilities.

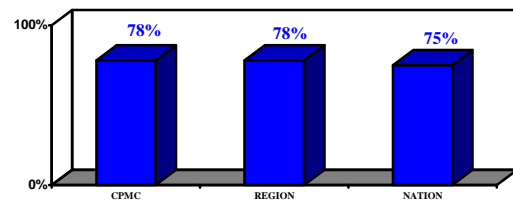
Our **Average Satisfaction** was 3.80.



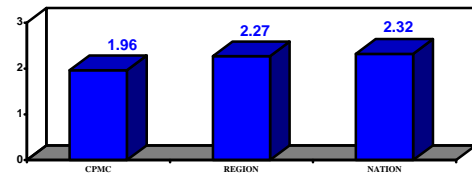
Improvement in Functional Level



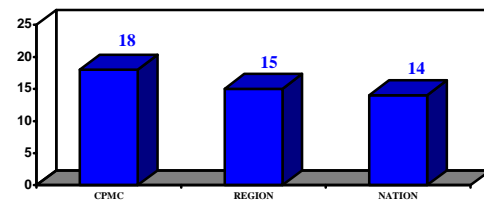
Admission FIM Data



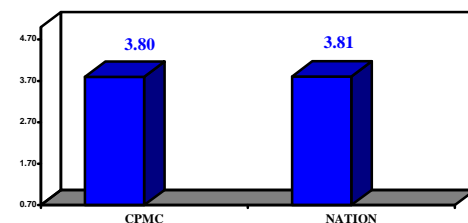
Community Discharges



Length of Stay Efficiency:  
FIM Increase for Length of Stay



Length of Stay



Average Satisfaction

## Brain Injury Specialty Program

The Acute Brain Injury Specialty Program at California Pacific Regional Rehabilitation Center provides a coordinated, outcome-driven, integrated rehabilitation program that addresses the complicated needs of individuals with acquired brain injuries. We emphasize a comprehensive and personalized approach to recovery that focuses on both the physical and psychosocial well being of the brain injured individual. Our goal is to achieve functional outcomes focused on home and community integration along with enhancement of self-worth and engagement in productive activities that improve quality of life.

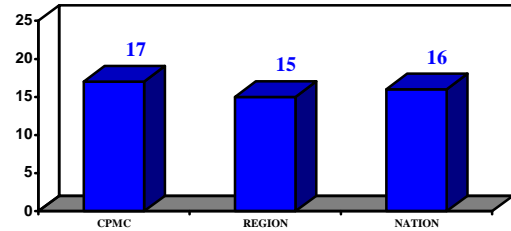
We served 76 individuals with an acquired brain injury in the inpatient program. Our Brain Injury Specialty Program had an **Average Length of Stay** of 17 days. During their stay, our patients achieved an average **Functional Improvement Level** of 27.6.

Our Brain Injury Specialty Program produced a **Length of Stay Efficiency** of 2.08.

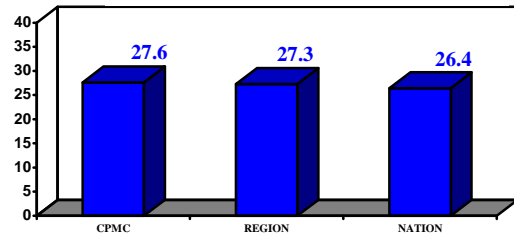
Our **Community Discharges** was 78%.

Our **Average Satisfaction** was 3.77.

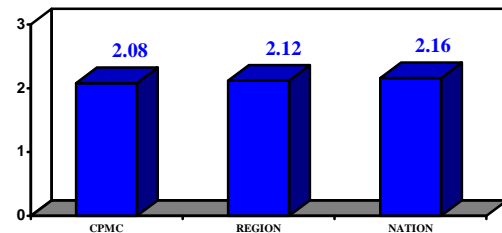
27 individuals were referred to the program the comprehensive Day Treatment Program. 21 individuals were referred to other programs or services that were better able to meet the individual's needs or preferences. 6 individuals were seen in the comprehensive BI Day Treatment Program; of those served 2 had traumatic brain injuries and 4 had non-traumatic brain injuries. 5 of the participants met some or all of their goals (83%). 1 individual was unable to continue the program and did not achieve any goals (15%). Treatment program duration ranged from 5 to 46 days with an average of 19 days.



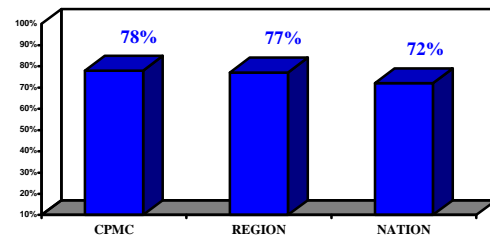
Length of Stay



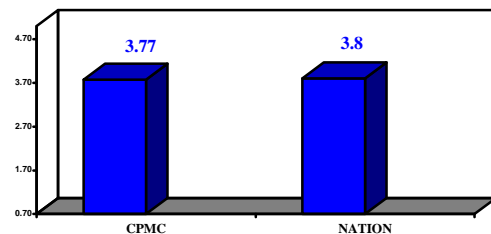
Improvement in Functional Level



Length of Stay Efficiency:  
FIM Increase for Length of Stay



Community Discharges



Average Satisfaction

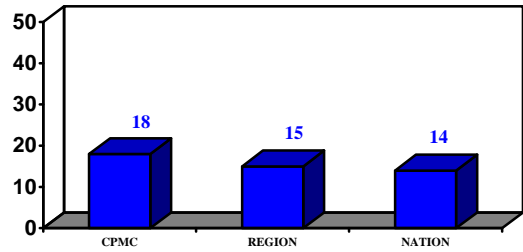
## Stroke Specialty Program

The Acute Stroke Specialty Program at California Pacific Regional Rehabilitation Center is a coordinated, outcome-driven, integrated rehabilitation program that provides individualized and expert treatment for Stroke survivors so that they may achieve greater life satisfaction, independence and productivity. We emphasize a comprehensive and personalized approach to recovery that focuses on the cognitive, emotional, social, and physical well being of the individual. Our goal is to achieve functional outcomes focused on home and community integration along with enhancement of self-worth and engagement in productive activities that improve quality of life.

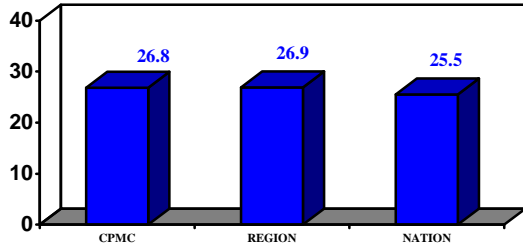
We served 150 stroke survivors. Our Stroke Specialty Program achieved an **Average Length of Stay** of 18 days. During their stay, our patients achieved an average **Functional Improvement Level** of 26.8, higher than the nation and in line with the region.

Our **Community Discharges**, 78%.

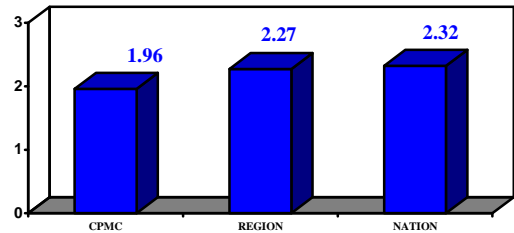
Our **Average Satisfaction** was 3.87 .



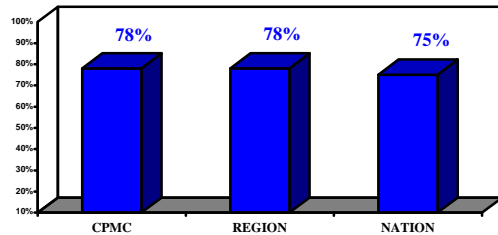
Length of Stay



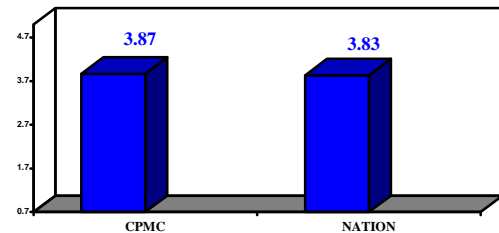
Improvement in Functional Level



Length of Stay Efficiency:  
FIM Increase for Length of Stay



Community Discharges



Average Satisfaction

## Amputee Specialty Program

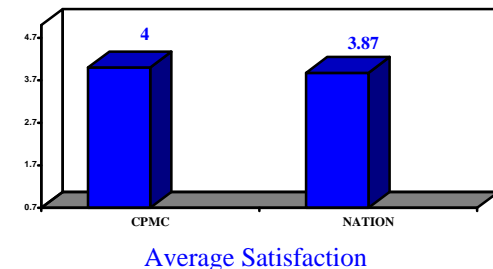
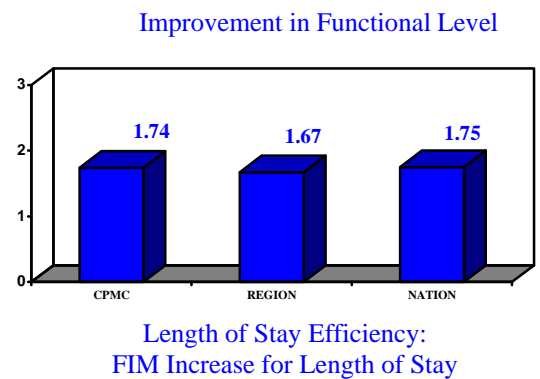
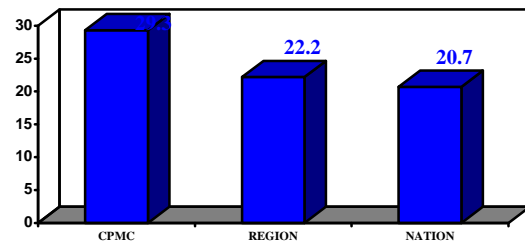
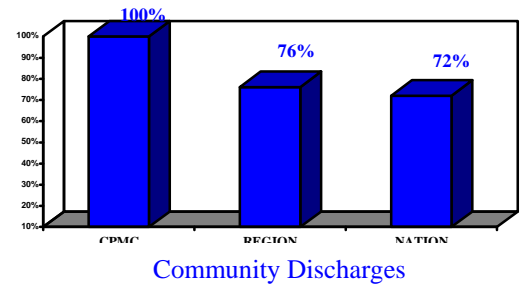
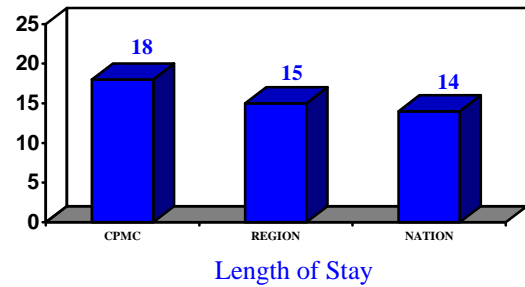
The Acute Amputee Specialty Program at California Pacific Regional Rehabilitation Center provides a coordinated, outcome-driven, integrated rehabilitation program that addresses the complicated needs of individuals with an amputation. We emphasize a comprehensive and personalized approach to recovery that focuses on the physical and psychosocial well being of the individual with an amputation. Our goal is to achieve functional outcomes focused on home and community integration along with engagement in productive activities that improve quality of life.

We served 3 Individuals in our Amputee Specialty Program.

**Average Length of Stay** of 18 days.

Our **Community Discharges** was 100 %.

Our **Average Satisfaction** was 4.00.



## Spinal Cord Injury Specialty Program

The Spinal Cord Injury Specialty Program at California Pacific Regional Rehabilitation Center is a coordinated, outcome-driven, integrated rehabilitation program that addresses the complicated needs of persons with spinal cord dysfunction. Our program focuses on preventing further impairment, reducing disability and maximizing function. Our goal is to achieve functional outcomes focusing on home and community integration, enhancement of self-worth, and engagement in productive activities.

Our Spinal Cord Injury Program served 60 individuals with spinal cord dysfunction in our Inpatient Program. Of the 60 individuals, we served 15 individuals with a traumatic spinal cord injury and 45 with non-traumatic spinal cord injury.

Our Inpatient Spinal Cord Specialty Program had an average **Length of Stay** of 19 days.

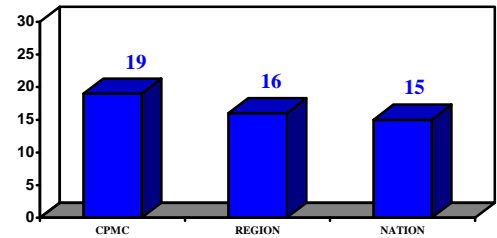
Our Inpatient Program Functional Independence Measure (FIM) for **Improvement in Functional Level** was 30.1.

Our **Community Discharges** was 80%.

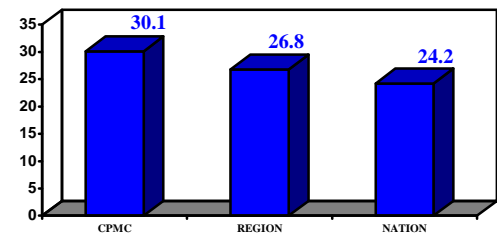
Our **Average Satisfaction** was 3.78.

In 2007 17 individuals were seen through the Spinal Cord System of Care for Outpatient Therapy services. 1 of these individuals received treatment through the SCI Day Treatment Program with 100% goal achievement. 4 individuals dropped out of the treatment program before completing the plan of care. Of the remaining 13 individuals who completed the treatment program 46% achieved some of their goals, 54% achieved all of their goals. The SCI Day Treatment Program received 5 referrals; of these, 4 were referred to other programs or services that were better able to meet the individual's needs or preferences.

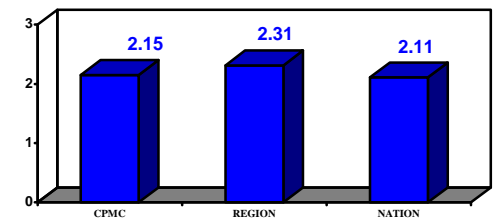
Thank you for taking the time to review our outcome information. If you would like to know more, or have other questions please contact us at 415-600-6153.



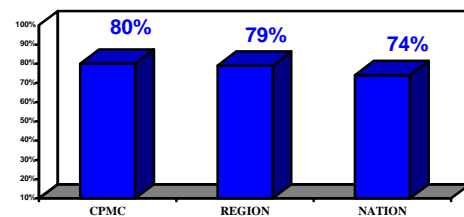
Length of Stay



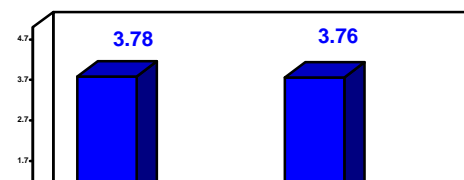
Improvement in Functional Level



Length of Stay Efficiency:  
FIM Increase for Length of Stay



Community Discharges



Average Satisfaction

California Pacific Regional Rehabilitation Center  
San Francisco, California