

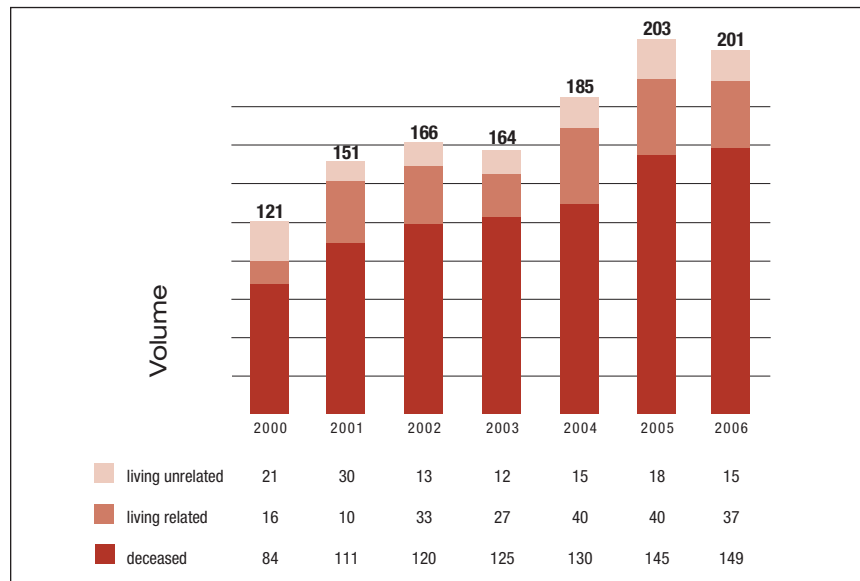
The Kidney and Pancreas Transplant Program at California Pacific Medical Center has a long and successful history.

The program has enjoyed outstanding results and is renowned for the excellence and dedication of its transplant physicians and surgeons. California Pacific performed its first kidney transplant in 1969 and has performed more than 3,000 since. Presently, nearly 200 patients annually receive kidney transplants at California Pacific. The first kidney-pancreas transplant at California Pacific was performed

in 1989 and the number of kidney-pancreas transplants has steadily increased, with the one-year survival rate exceeding 90%.

When you compare our results to those of other kidney and pancreas transplant programs in Northern California, you'll find that California Pacific Medical Center has an excellent record of success. We've set the standard as one of the top transplant programs in the country.

**Kidney Transplant Volumes: 2000–2006
California Pacific Medical Center**



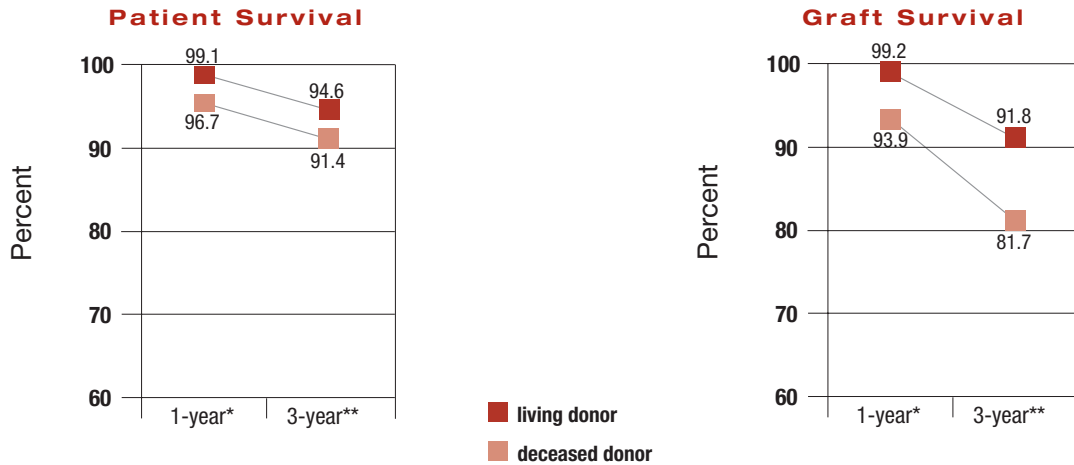
**Kidney Transplant Graft and Patient Survival
California Pacific vs. Nationwide Data**

Outcomes	California Pacific (%)	National (%)
One-Year Graft Survival Rate*	95.5	91.9
Three-Year Graft Survival Rate**	84.8	82.3
One-Year Patient Survival Rate*	97.5	96.1
Three-Year Patient Survival Rate**	92.4	90.3

*Based on national and center-specific data from the Scientific Registry of Transplant Recipients (www.ustransplant.org) for 1/1/03–6/30/05

**Based on national and center-specific data from the Scientific Registry of Transplant Recipients (www.ustransplant.org) for 7/1/00–12/31/02

Living vs. Deceased Donor California Pacific Medical Center



*Based on national and center-specific data from the Scientific Registry of Transplant Recipients (www.ustransplant.org) for 1/1/03–6/30/05

**Based on national and center-specific data from the Scientific Registry of Transplant Recipients (www.ustransplant.org) for 7/1/00–12/31/02

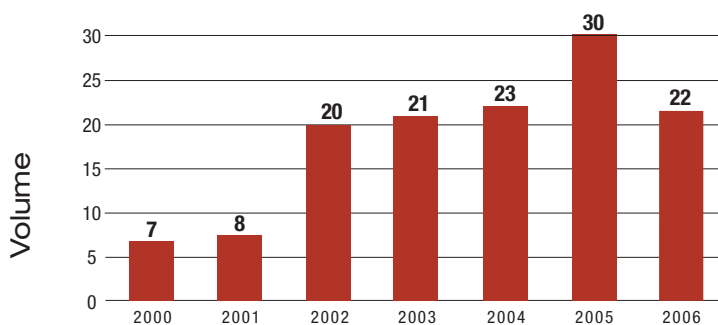
Kidney-Pancreas Transplant Graft & Patient Survival California Pacific vs. Nationwide Data

Outcomes	California Pacific (%)	National (%)
One-Year Transplant Graft Survival (Kidney)*	92.0	91.0
Three-Year Transplant Graft Survival (Kidney)**	100.0	84.5
One-Year Transplant Graft Survival (Pancreas)*	88.2	85.3
Three-Year Transplant Graft Survival (Pancreas)**	96.4	78.6
One-Year Patient Survival*	94.3	94.9
Three-Year Patient Survival**	100.0	90.0

*Based on national and center-specific data from the Scientific Registry of Transplant Recipients (www.ustransplant.org) for 7/1/01–12/31/03

**Based on national and center-specific data from the Scientific Registry of Transplant Recipients (www.ustransplant.org) for 1/1/99–6/30/01

Kidney-Pancreas Transplant Volumes 2000–2006 California Pacific Medical Center



*California Pacific
Medical Center*

A Sutter Health Affiliate
With You. For Life.

Kidney & Pancreas Transplant Program

California Pacific Medical Center
2340 Clay Street, 4th Floor
San Francisco, California 94115
Tel. 415-600-1000
Toll-Free 1-877-4-CPMC-TX
(1-877-427-6989)

www.cpmc.org/kidney