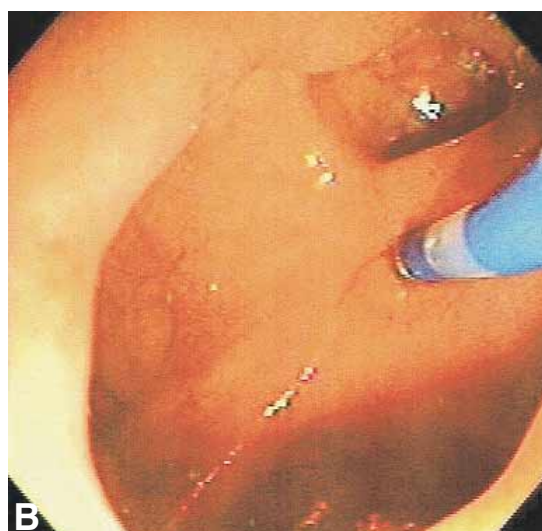
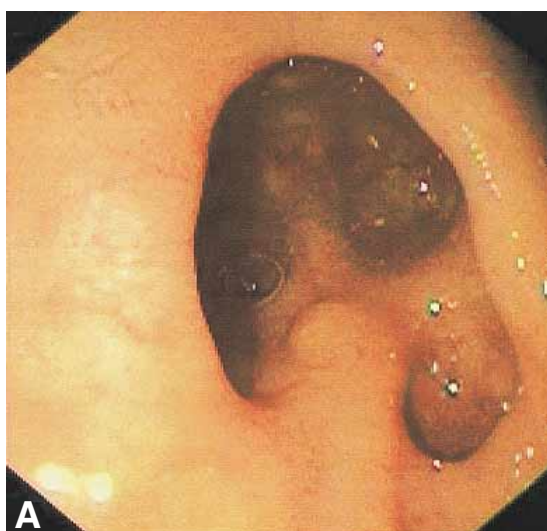

PERI-MINOR-AMPULLARY DIVERTICULUM



An 82-year-old man was referred for evaluation of multiple cysts throughout the pancreas. EUS demonstrated a large duodenal diverticulum containing the major papilla and confirmed the presence of the pancreatic cysts. ERCP, performed to evaluate ductal communication with the cysts, revealed a large diverticulum containing the major papilla (A). Further inspection showed that the minor papilla was also within a separate large duodenal diverticulum (B). Successful cannulation of both papillae demonstrated incomplete pancreas divisum and no duct communication with the pancreatic cysts.

DISCLAIMER

The views expressed in this article are those of the authors and do not reflect the official policy or position of the Department of the Navy, Department of Defense, or the United States Government.

T. W. Schafer, MD

*Department of Medicine, Division of Gastroenterology
Naval Medical Center
San Diego, California*

K. F. Binmoeller, MD

*Department of Gastroenterology
University of California at San Diego
San Diego, California*

doi:10.1067/mge.2001.116112