

Report to the Community



CPMC partners with Lions Eye Foundation to provide specialized eye care to those in need.



Our not-for-profit mission...

To enhance the well-being of people in the communities we serve through a not-for-profit commitment to compassion and excellence in healthcare services.

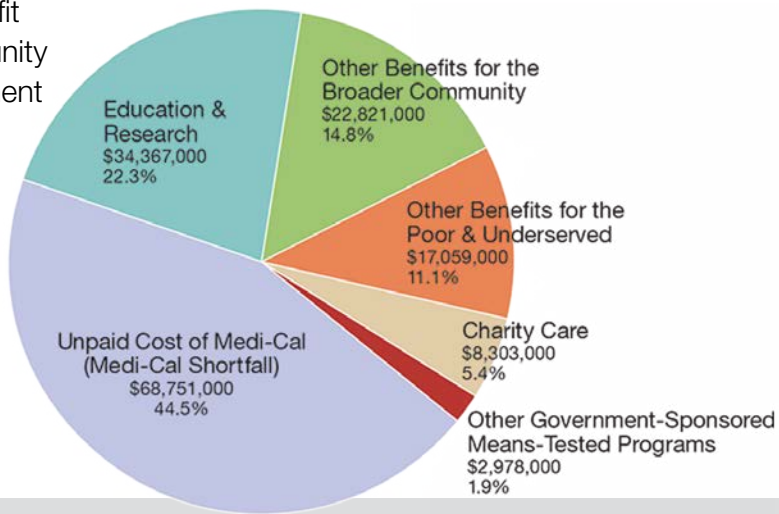
CPMC's Community Benefit Program aims to support this mission by making our healthcare system more accessible for everyone and supporting programs and services for communities in need.

Investing in a Healthier Community

CPMC makes community benefit contributions to the communities it serves as part of its tax-exempt status. These include traditional charity care and the unreimbursed costs of providing care to Medi-Cal patients, as well as investments in health professions education, research, and public benefit programs such as community clinics and child development services for low-income patients.

This brochure highlights some selected program achievements from 2016.

In 2016, CPMC provided \$154.3 million in quantifiable community benefit expenditures.



As a member of the San Francisco Health Improvement Partnership (SFHIP), CPMC participates in a collective needs assessment process to ensure that our community benefit investments are responsive to community health needs, as required by the state and federal governments. SFHIP is a consortium of hospitals and other healthcare-related nonprofit stakeholders that draws on a diversity of perspectives and expertise to determine where efforts can most effectively address the city's health disparities.

2016–2018 Priority Needs

- Access to Care
- Healthy Eating and Physical Activity
- Behavioral Health

Access to Care

Charity Care

Free care to the uninsured with family incomes below 400 percent of the federal poverty level.

CPMC has the most generous charity care policy of any private hospital in San Francisco.



3,524

patients served

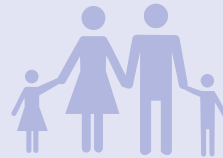
2,346

charity care patients were seen in CPMC's emergency rooms

Medi-Cal

CPMC provides care for Medi-Cal beneficiaries with coverage through the State of California.

In a Medi-Cal Managed Care partnership, CPMC serves as the hospital partner for Medi-Cal patients who select North East Medical Services (NEMS) as their medical group through San Francisco Health Plan (SFHP).

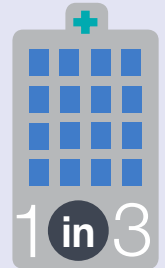


40,850 patients served



33,172

patients enrolled in Medi-Cal Managed Care partnership with NEMS



SFHP Medi-Cal members call CPMC their in-network hospital

St. Luke's Health Care Center

Subsidized, bilingual primary and preventive care for residents of the Mission and other neighborhoods with high disparities related to key socioeconomic determinants of health.

At HealthFirst, an affiliated center for education and prevention, community health workers coach patients to help them better manage chronic diseases such as asthma and diabetes.



13,010 patients served

40,345 patient visits

patients served by HealthFirst...



787

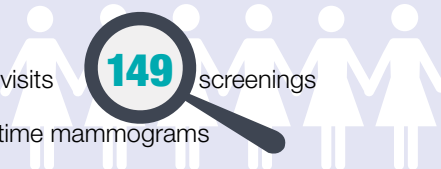
Breast Health Programs

Free mammography screening and all subsequent diagnostic testing and treatment for uninsured women.

153 patient visits

149 screenings

13 first-time mammograms



Partnership with Zuckerberg SF General

CPMC partners with Zuckerberg SFGH to ensure that patients have access to timely services by providing free diagnostics for those referred.



638

patients served



America's Healthiest Children

Kalmanovitz Child Development Center

Two San Francisco clinics provide diagnosis, evaluation, treatment and counseling for children with learning disabilities and developmental, medical or behavioral challenges.

Services extend into the community through partnerships with local schools and other community organizations.



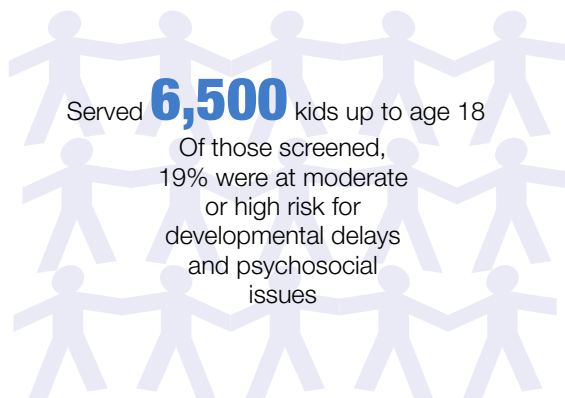
Children from low-income families have a



higher risk of developmental disabilities

Joint Venture Health

Developmental and behavioral health screening and treatment services for low-income children at community clinics, in partnership with UC Berkeley's School of Public Health and North East Medical Services (NEMS). Currently, the program provides these services at NEMS, which serves one in ten kids who live in San Francisco.

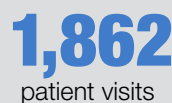


Bayview Child Health Center

Primary, preventive and urgent pediatric care in one of San Francisco's most medically underserved neighborhoods.

The clinic addresses prevalent community health issues such as weight control and asthma management, as well as the impact of violence and childhood trauma on children's mental and physical health.

CPMC partners with South of Market Health Center and the Center for Youth Wellness to ensure patients have access to the medical and mental health services they need.



Training the Next Generation of Healthcare Workers

Medical Education Programs

World-class training in medicine, nursing and other allied health professions.

Community Workforce Programs for Youth

Opportunities for youth through internships and other forms of work-readiness training and career exploration experience.

Partnerships with schools and agencies include Galileo Health Academy, Year Up, Immaculate Conception Academy, and Meritus.



167
physicians
trained

206
medical
students

506
nursing
students

140
interns in
other health
professions



9 program partners
111 individuals served

Biomedical and Clinical Research

CPMC Research Institute brings clinicians and researchers together to discover improved treatments and diagnostic technologies.

Over 80 principal investigators lead innovative research in cancer, aging, arthritis, cardiovascular disease, diabetes, epilepsy, infectious diseases, neurobiology of pain, neurodegenerative diseases, and osteoporosis.



200+
current clinical
trials

Part of an integrated research enterprise serving 3 million patients annually at 27 community hospitals

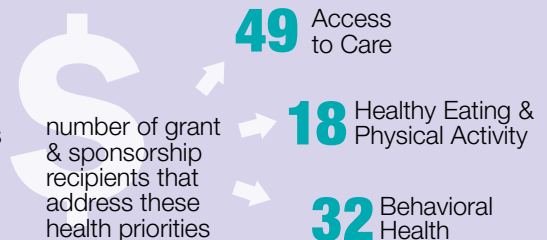
Community Partnerships

Through grants and event sponsorships, community health programming, and community outreach, CPMC supports about 80 organizations that collectively serve more than a half million people. These partnerships allow us to promote our shared community health priorities and build the capacities of deeply rooted organizations.

Some examples of partnerships include:

Operation Access (OA) – Access to diagnostic screenings, specialty procedures, and surgical care at no cost for uninsured patients.

Lions Eye Foundation (LEF) – Community clinics refer uninsured patients to the LEF clinic at CPMC for highly specialized eye care.



28 CPMC volunteer physicians...
...served **139** OA patients



281 Lions eye surgeries
1,309 diagnostic tests

For more information, go to www.cpmc.org/about/community

© 2017 Sutter Health. All rights reserved 17-CPMC-0008892-COMB_ReportToTheCommunity2016_ADA

